

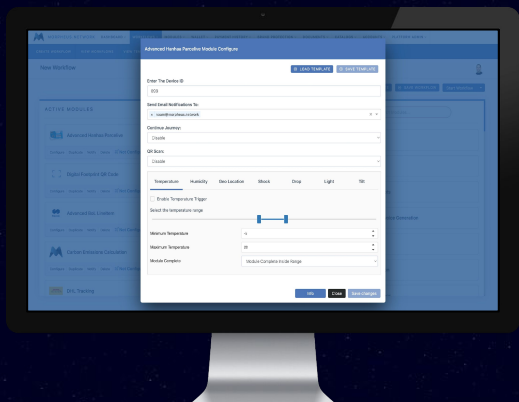
Digital. Automated. Optimized Global Supply Chains.

Morpheus.Network is a software solution that focuses exclusively on simplifying the day to day of supply chain managers. Our simple to use platform seamlessly connects your companies existing systems and data with trusted third party data sources and key stakeholders to automate manual processes resulting in higher productivity and cost-savings.

The platform allows customers to easily integrate new technologies like Blockchain, IoT, Artificial Intelligence, Machine Learning, Data Analytics, and much more into their existing infrastructure.

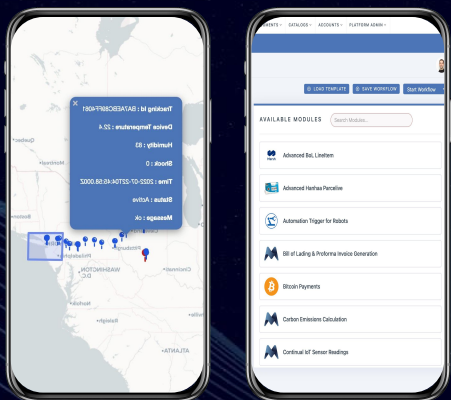
Morpheus.Network provides:

- A middleware solution that integrates all your current systems, eliminating the need to "rip and replace"
- An API hub with 150+ connections to systems of record and multiple IoT providers, delivering actionable data from key supply chain partners
- Automated workflow engine designed for effective, digital collaboration between systems, stakeholders and trading partners, and government agencies
- A multi-modal tracking portal monitors all shipments in real time with data on position, documents temperature, humidity, shock, reliable ETAs, and more



Using our platform, customers can:

- Use the event notification hub to identify problems and blind spots before they become critical, improving team effectiveness and productivity.
- Receive milestone alerts for missed bookings and improved shipment visibility and better communication with key stakeholders reducing DSO / Accounts Receivable / Working Capital.
- Register your financial, supply chain and SDG audit and compliance events using our Digital Footprint.



Get in touch with one of our supply chain experts today!

